

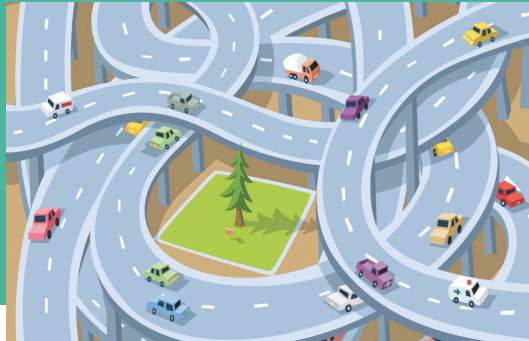


CAREER PATHWAYS

News, Notes, and Stories

February 2011

ISSUE NO. 5



More Green Career Pathway Statewide Roadmaps

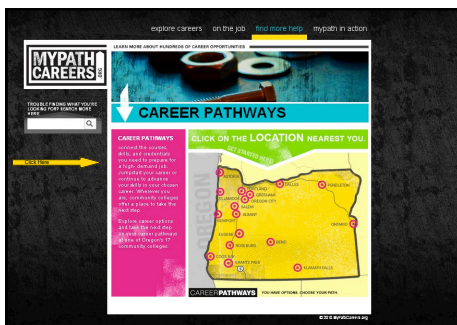
Take a moment to check out the test website for the Green Career Pathways Project. In the fall we developed two green statewide roadmap prototypes. Thanks to more than 30 individuals who provided feedback through the website. The Construction/Carpentry roadmap, the newest statewide roadmap, was loaded on the website this week. The statewide roadmaps include both community college programs and apprenticeship programs throughout Oregon. The review period is through Monday, February 21. In February we'll begin developing of the Wind Energy statewide roadmap and in the spring we'll be focused on the last roadmap for the project: Manufacturing.

We welcome your feedback---and it's easy:

Go to: www.oregongreenpathways.org

The Login is: green The Password is: guest

At the bottom of each page you can provide your feedback. Once you enter your feedback we receive an email with the feedback making it easy to follow up with you.



Career Pathway Roadmap WebTool: Thanks to our Users

Each year we make improvements to the Career Pathway Roadmap WebTool based on suggestions and feedback from WebTool users. We want to take a moment to thank all of the users who have made contributions over the last year. Although we aren't able to implement all requests for new features and improvements, many ideas from users have been implemented.

A big thank you goes out to "power user" **Angelica Woods** of *Rogue Community College*. Her use of the Web Tool has helped to debug many Roadmap and POST Drawing features, and brought improvements such as: reversing the order of versions in the drawing lists; adding a print frame (guide) to the roadmap drawing canvas; and adding optional row headers to POST drawing tables (similar to the footer row for additional content and hyperlinks).

We also want to thank **Scott Donnell** of *Central Oregon Community College*, **Jacque Talboy** of *Blue Mountain Community College*, **Patrician Davidson** of *Southwestern Oregon Community College*, and many more, for improvements and features such as: color swapping in the color palette; adding/displaying course credits in POST drawings; retaining keyword search results in the drawing lists; overriding preferred external hyperlinks to embedded Roadmap and POST drawings; unpublishing drawings; and printing roadmaps to PDF documents.

More great features and feature improvements are in the works, however your feedback is critical to our development. Please email your suggestions or ideas to our committee at helpdesk@ctepathways.org.

Currently, the WebTool has 336 registered users from 17 Oregon community colleges, 54 high schools, and 17 other agencies and organizations. There have been more than 18,000 "hits" (pageviews) on the roadmaps over the past six months.

As of 12/31/10, there are 361 published roadmaps and 147 complete Plan of Study templates (POST) with both high school and community college articulation information charted with more than 200 additional templates in development.

Career Pathways in the News

Commissioner Camille Preus, Pamela Murray from PCC, and **Agnes Balassa** representing the Oregon Workforce Partnership comprised the Oregon team that worked for two days in late November at the Career Pathways Technical Assistance Initiative in Washington, D.C. The Oregon team worked with nine states and two tribal areas to develop a strategic plan for implementing a career pathway program at the local level. The Career Pathways Technical Assistance Initiative is funded by the U.S. Department of Labor.

Commissioner Camille Preus presented at the Department of Labor's Re-employment National Summit in Washington, D.C. on December 15, 2010 on Career Pathways in Oregon. She participated on a panel with representatives from two other states with statewide initiatives in career pathways: Virginia and Wisconsin.

The Center for Law and Social Policy (CLASP) in Washington, D.C. sponsored a webinar on "Dollars & Sense: Using Federal Resources to Fund Career Pathways and Bridges" on November 18, 2010. **Mimi Maduro**, Pathways Initiative Director, participated as one of the two speakers on the webinar presenting on Career Pathways in Oregon. Dr. Karon Rosa presented on statewide career pathway efforts in Arkansas. More than 200 people from across the US participated in the webinar.

To learn more:

www.clasp.org/postsecondary



Career Pathways in the News Cont.

Pathway Alliance members showcased a number of Oregon efforts at the National Council for Workforce Education (NCWE) conference in October in Washington, D.C. **Serena St. Clair** presented on Rogue's "Summer Institute on Sustainability: Key Competencies to Address Complexity"; **Dawn DeWolf** presented on Lane's grant from Wal-Mart on serving dislocated workers; and **Andrew Roessler** and **Mimi Maduro** presented on "Career Pathway Certificates in Oregon: Stepping Stones Toward a Degree."

Career Pathway Grants: Progress Across the State

Pathways Director, Mimi Maduro, traveled across Oregon in November and December to meet with Pathway leaders and partners at each of the community colleges to discuss progress on the college's Career Pathway grant as well as ideas for future implementation.

Collectively, the colleges are increasing the number of Career Pathway and other 12-44 credit Certificates and are on track to meet Certificate completer goals by June 2011.

Upcoming Event

The Oregon Pathways Alliance, pathways leaders across the 17 colleges, convene quarterly to share ideas, strategies, promising practices as well as learn about related local, state, and national efforts and policies.

On March 15 & 16, the Alliance will be meeting for their annual retreat for two days to chart progress, brainstorm, and plan for the future. This year's retreat will be held at the Oregon Garden, in Salem.

Career Pathways



Creating paths for Oregonians to enter and advance in their careers

&



Helping fix the "leaky pipeline" of workers for Oregon's demand industries

www.oregonpathways.org
www.MyPathCareers.org/cp



Mimi Maduro
Pathways Statewide Director
Community Colleges and Workforce Development
541-506-6105
mmaduro@cgcc.cc.or.us